

# MEMBERSHIP RECRUITMENT DRIVE

*Terms & Conditions*

## 1- Ipeelee

- Mosele wa pula....
- Savings Growth

## 2- Ikadime

- Our Loans
- Grow your wealth

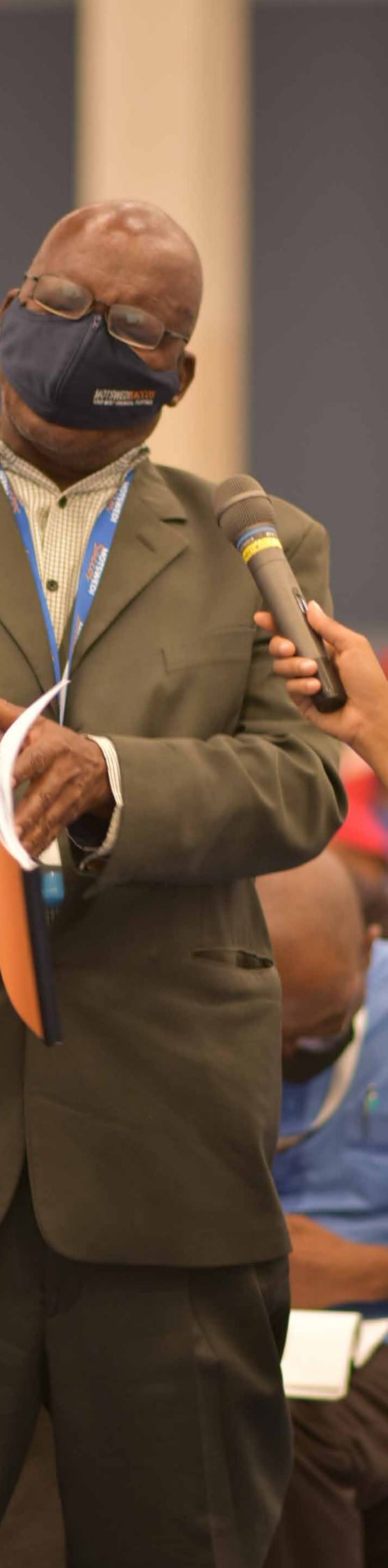
## 3- Ituele

- High savings Returns
- Profit sharing

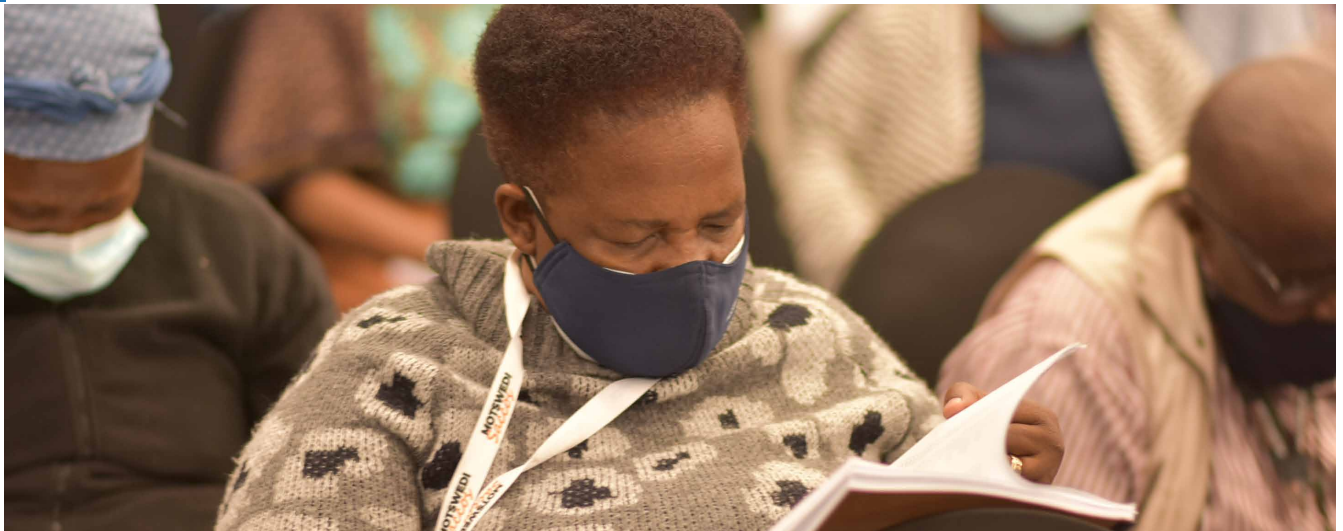


TSHWARAGANO





- 01. Background
  - 02. Eligibility
  - 03. Requirements
  - 04. Recruitment Drive
-



## BACKGROUND

### Our History

Motswedi Savings and Credit Cooperative Society was established by the Staff of Department for Cooperative Development and Botswana Cooperative Bank on the 19th of November 1985. The Cooperative Society is registered under the Co-operative Act NO. 5 of 1989. Motswedi SACCOS has evolved resulting in the expansion of common bond to include all Government Ministries & Parastatal Institutions.

---

### Our Vision

To be the best Financial Service Cooperative in SADC Region.

---

### Our Mission

To provide quality, affordable financial services to its members and to improve their Socio-economic well-being.

---

### Motswedi Core Values

- Integrity
  - Accountability
  - Teamwork
  - Transparency
-



---

## Our Aims

- To encourage business ownership -be a Motswedi SACCOS shareholder.
  - To encourage members to save regularly.
  - To provide low-cost loans to members.
  - To develop a sense of co-operation and solidarity.
- 

## Who can be a member

Employees in all Government Ministries, Departments, Councils and Parastatals

---

*Motswedi SACCOS - "Wa o esi ga o ele"*



---

## Requirements

- Completed membership application form.
  - KYC form
  - Certified ID
  - Group funeral Scheme application form.
  - Confirmation of employment letter
  - Confirmation of Banking details
  - P200.00 joining fee.
- 

## Membership Recruitment Drive Period

The Membership Recruitment Drive commenced on the 3rd of October 2024 and shall end on the 31st January 2025. Nevertheless you are encouraged to continue recruiting even more members beyond the current promotion.

---





TSHWARAGANO

# 2024

## Contact



Zambezi Towers,  
CBD - Gaborone



390 8227 / 350 0973  
77 892 470 / 75 403 756



[www.motswedisaccos.co.bw](http://www.motswedisaccos.co.bw)  
[info@motswedisaccos.co.bw](mailto:info@motswedisaccos.co.bw)



Motswedi Sacoos